

Bellevue Real Estate

**RD 240 LLC
105 Enterprise Dr.
Parcel# 03600009000 (Sandusky County)**



PROPERTY/SITE DETAILS

Building – Storage/Warehouse

Size: 39,600 SF

Asking price - \$1,950,000

UTILITIES

Water: City of Bellevue

Waste Water: City of Bellevue

Gas: Columbia Gas

Electric: Ohio Edison

Fiber: Frontier, Omni or Spectrum

Zoning: I-1 (Wholesale & Light Industrial)

Incentives: CRA/Job Creation Tax Credit

Contact: Dave Sabo -Economic Dev. Director

419-484-5530

dave.sabo@cityofbellevue.com

Bellevue Real Estate

**International Metal Hose Co
Allen Dr (Wolfe Industrial Park)
Parcel# 01003L060150600 (Huron County)**



PROPERTY/SITE DETAILS

Site - 6.345 acres

Asking price - \$20,000/acre

UTILITIES

Water: City of Bellevue

Waste Water: City of Bellevue

Gas: Columbia Gas

Electric: Ohio Edison

Fiber: Frontier, Omni or Spectrum

Zoning: I-1 (Wholesale & Light Industry District)

Incentives: CRA/Job Creation Tax Credit

Contact: Dave Sabo -Economic Dev. Director

419-484-5530

dave.sabo@cityofbellevue.com

Bellevue Real Estate

**International Metal Hose Co
Allen Dr (Wolfe Industrial Park)
Parcel# 01003L060150700 (Huron County)**



PROPERTY/SITE DETAILS

Site - 6.806 acres

Asking price - \$20,000/acre

UTILITIES

Water: City of Bellevue

Waste Water: City of Bellevue

Gas: Columbia Gas

Electric: Ohio Edison

Fiber: Frontier, Omni or Spectrum

Zoning: I-1 (Wholesale & Light Industry District)

Incentives: CRA/Job Creation Tax Credit

Contact: Dave Sabo -Economic Dev. Director

419-484-5530

dave.sabo@cityofbellevue.com

Bellevue Real Estate

**4JY Properties LLC
1701 E Main St (US RT 20)
Parcel# 010310010120100 (Huron County)**



PROPERTY/SITE DETAILS

Building – Currently Auto Sale

Dealer showroom – 2500 sf

Garage – 4250 sf

Site – 4.103 acres

Asking price - \$850,000

UTILITIES

Water: City of Bellevue

Waste Water: City of Bellevue

Gas: Columbia Gas

Electric: Ohio Edison

Fiber: Frontier, Omni or Spectrum

Zoning: B-2 – General Commercial District

Incentives: CRA/Job Creation Tax Credit

Contact: Dave Sabo -Economic Dev. Director

419-484-5530

dave.sabo@cityofbellevue.com

Bellevue Real Estate

**4JY Properties LLC
0 E Main St (US RT 20)
Parcel# 010310010120000 (Huron County)**



PROPERTIES/SITE DETAILS

Car dealer lot

Site - 3.025 acres

Asking price - \$450,000

UTILITIES

Water: City of Bellevue

Waste Water: City of Bellevue

Gas: Columbia Gas

Electric: Ohio Edison

Fiber: Frontier, Omni or Spectrum

Zoning: B-2 - General Commercial District

Incentives: CRA/Job Creation Tax Credit

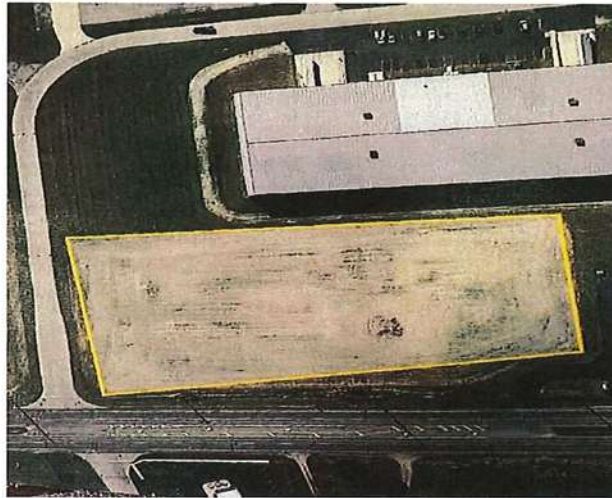
Contact: Dave Sabo -Economic Dev. Director

419-484-5530

dave.sabo@cityofbellevue.com

Bellevue Real Estate

**Kurtiss Hirt Trustee
Hirt Dr (U S Rt 20 W)
Parcel# 035000223100 (Sandusky County)**



PROPERTY/SITE DETAILS

Site - 4.28 acres

Asking price - \$105,000/acre

UTILITIES

Water: City of Bellevue

Waste Water: City of Bellevue

Gas: Columbia Gas

Electric: Ohio Edison

Fiber: Frontier, Omni or Spectrum

Zoning: B-2 (General Commercial District)

Incentives: CRA/Job Creation Tax Credit

Contact: Dave Sabo -Economic Dev. Director

419-484-5530

dave.sabo@cityofbellevue.com

Bellevue Real Estate

Miller, Wesley G
1355 W Main St (US Rt 20)
Parcel# 036000010508 (Sandusky County)



PROPERTY/SITE DETAILS

Building – Medical Office Building

Size: 3,017 SF

Asking price - \$350,000

UTILITIES

Water: City of Bellevue

Waste Water: City of Bellevue

Gas: Columbia Gas

Electric: Ohio Edison

Fiber: Frontier, Omni or Spectrum

Zoning: B-2 (General Commercial District)

Incentives: CRA/Job Creation Tax Credit

Contact: Dave Sabo -Economic Dev. Director

419-484-5530

dave.sabo@cityofbellevue.com

Bellevue Real Estate

Legacy Development Properties LTD
550 Goodrich Rd
Parcel# 010080010160100 (Huron County)



PROPERTY/SITE DETAILS

Building – Woodard Photography

16,130 SF

Site – 1.91 acres

Asking price - \$599,000

UTILITIES

Water: City of Bellevue

Waste Water: City of Bellevue

Gas: Columbia Gas

Electric: Ohio Edison

Fiber: Frontier, Omni or Spectrum

Zoning: I-2 (Heavy Industrial District)

Incentives: CRA/Job Creation Tax Credit

Contact: Dave Sabo -Economic Dev. Director

419-484-5530

dave.sabo@cityofbellevue.com